

# GOTHAM

M A G A Z I N E

Summer 2007

**10011**

Thinking of plunking yourself down in this superpopular Chelsea nabe, with its art-world denizens, wine cellars, exorbitantly priced Kobe steaks, and High Line excitement? Better hurry!

by *Elisa Mala*

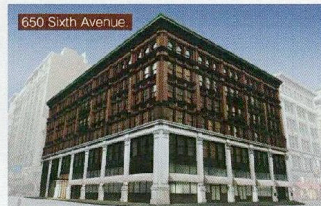
## RECENT DEVELOPMENTS

### Chelsea Stratus

Worn out from an afternoon on the indoor basketball court or in the billiards room? Grab a bottle of wine from the private, climate-controlled locker in the wine cellar and unwind in the landscaped garden or by the fireplace in the lounge. *Chelsea Stratus, 101 West 24th Street, 212-414-4101; chelseastratus.com.*

### 650 Sixth Avenue

With Quintessentially's concierge service, a wine cellar, and a roof deck, these white-on-white apartments are the soul of clean living. *650 Sixth Avenue; 650sixth.com.*



### The Caledonia

Overlooking the High Line, this complex offers a washer and dryer in each apartment, a pet spa, and the rarest of New York amenities: indoor parking with 24-hour attendants. *Caledonia, 450 West 17th Street, 212-633-1717; thecaledonia.com.*



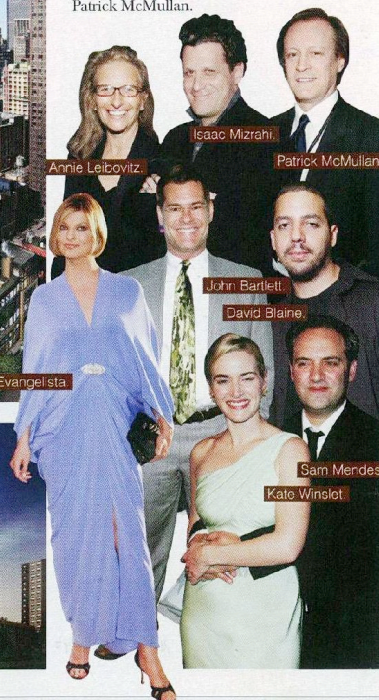
## LONDON TERRACE BEST ADDRESS

### London Terrace

This 10-building complex has occupied an entire city block since 1930, and its amenities—an acre of gardens, a half-Olympic-size Art Deco pool, and rooftop deck—are outshone by its starry residents. Area brokers report that former inhabitants include Andy Warhol and Nicole Kidman, while the current residential roster includes Debbie Harry, photographer Annie Leibovitz, Sam Waterston (*Law & Order*), City Council Speaker Christine Quinn, and fashion designer John Bartlett. *London Terrace, 465 West 23rd Street, 212-243-3835; londonterrace Towers.com.*

## NEIGHBORS

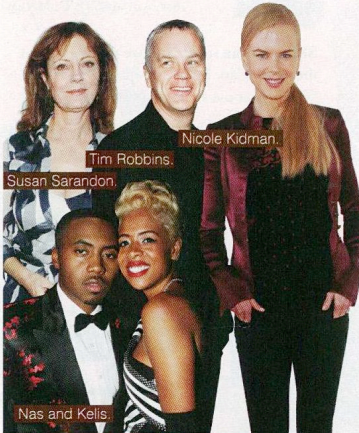
David Blaine, Isaac Mizrahi, Susan Sarandon and Tim Robbins, Nas and Kelis, Kate Winslet and Sam Mendes, Linda Evangelista, and Patrick McMullan.



## BITS AND BOBS



- The average price of a one-bedroom apartment is \$839,544.
- Completed in 1934, the tracks of the now-defunct elevated railway known as the High Line will soon become a public park.



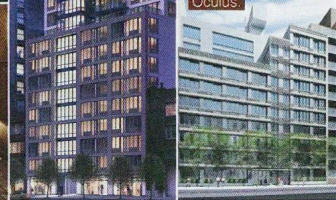
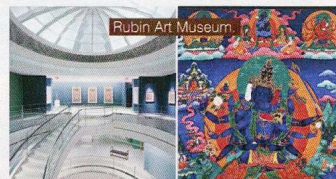
## HANGOUTS

**BLT Burger** (470 Sixth Avenue, 212-243-8226) Home of the \$62 Japanese Kobe burger, this kid-friendly spot boasts a dreamy selection of milk shakes and desserts, plus a curiously satisfying soda hodgepodge known as the Pop Bomb.

**Red Cat** (227 10th Avenue, 212-242-1122) Whether you're craving a quick cocktail at the bar or a three-course meal featuring a wonderfully tender New York shell steak, this local haunt offers fine dining sans flippant service.



**Tea & Sympathy** (108 Greenwich Avenue, 212-989-9735) "We're sort of the unofficial British consulate," explains co-owner Sean Kavanagh-Dowsett. Says partner Nicky Perry of offerings like shepherd's pie, toffee pudding, and teas and sweets that would be hard to locate even in the UK: "You don't need to go to England. You can come here!"



## BIG-BUDGET BROKERS

Matthew Mackay, senior vice president,  
The Corcoran Group  
(212-444-7895; corcoran.com)

Darren Sukenik, executive vice president,  
Prudential Douglas Elliman  
(212-727-6111; elliman.com)

Richard Hamilton, senior vice president,  
Halstead Property  
(212-381-6548; halstead.com)

## ★ PERKS

**A developer's dream:** A zoning change allowing for residential real estate has resulted in a building frenzy. Alchemy Properties oversees construction of the Oculus, which has a terracotta façade, and the Indigo, with its zinc front. The apartments are eco-friendly at Arpad Baksa's the Modern and Jean Nouvel's 100 11th Avenue. Jade by Jade Jagger provides podlike kitchens and a taste of the rock-star lifestyle.

**Never go hungry again:** Eclectic eats abound in this 'hood, with vegetarian offerings at Blossom, all-you-can-eat mussels on Wednesday nights at BLT Fish, and ostrich burgers at Burgers & Cupcakes. Grab a midnight snack at Bette, Morimoto, or Buddakan, which are open until midnight (later on weekends), or at Cafeteria, which never closes at all. Have a hankering to be fed by a famous chef? Try Bobby Flay's Mesa Grill or Mario Batali's Del Posto.

**Art of the avant-garde:** For old-world masterpieces, look elsewhere—the contemporary art emerging from this neighborhood is likely to challenge the status quo. The Rubin Art Museum specializes in Himalayan pieces, while galleries showcasing cutting-edge work pepper nearly every block.

